

# INSTALLATION INSTRUCTIONS FOR THE MODEL 830-AA SERVICE SINK WITH INTEGRAL VACUUM BREAKER

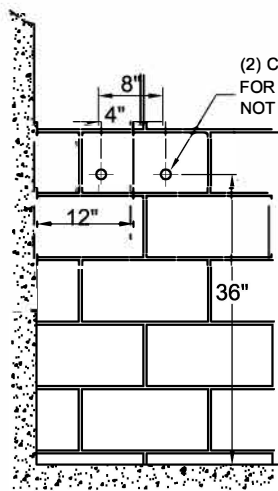


Fig. 1

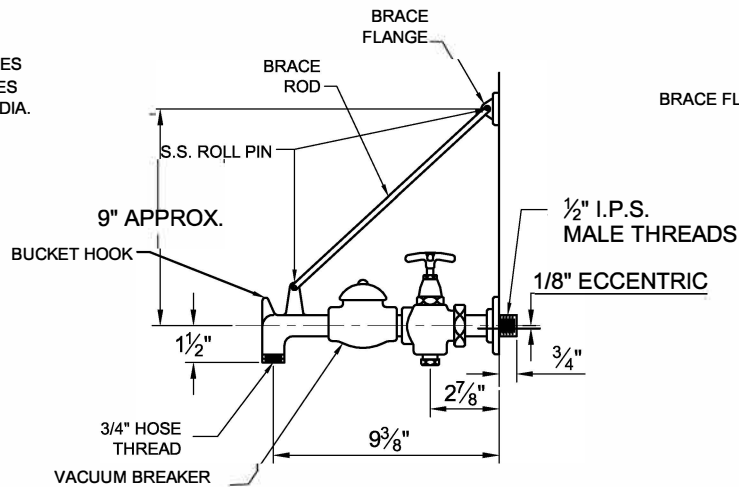


Fig. 2

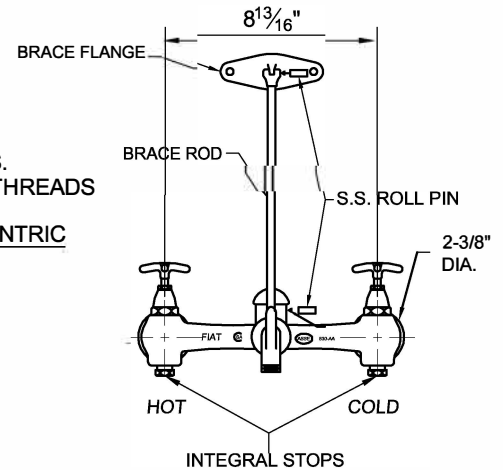


Fig. 3

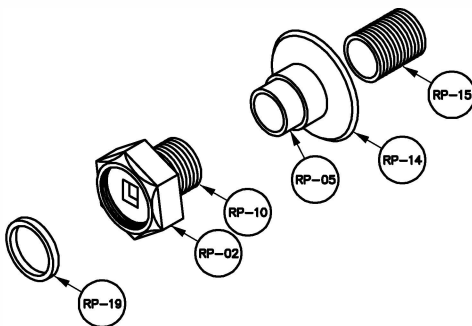


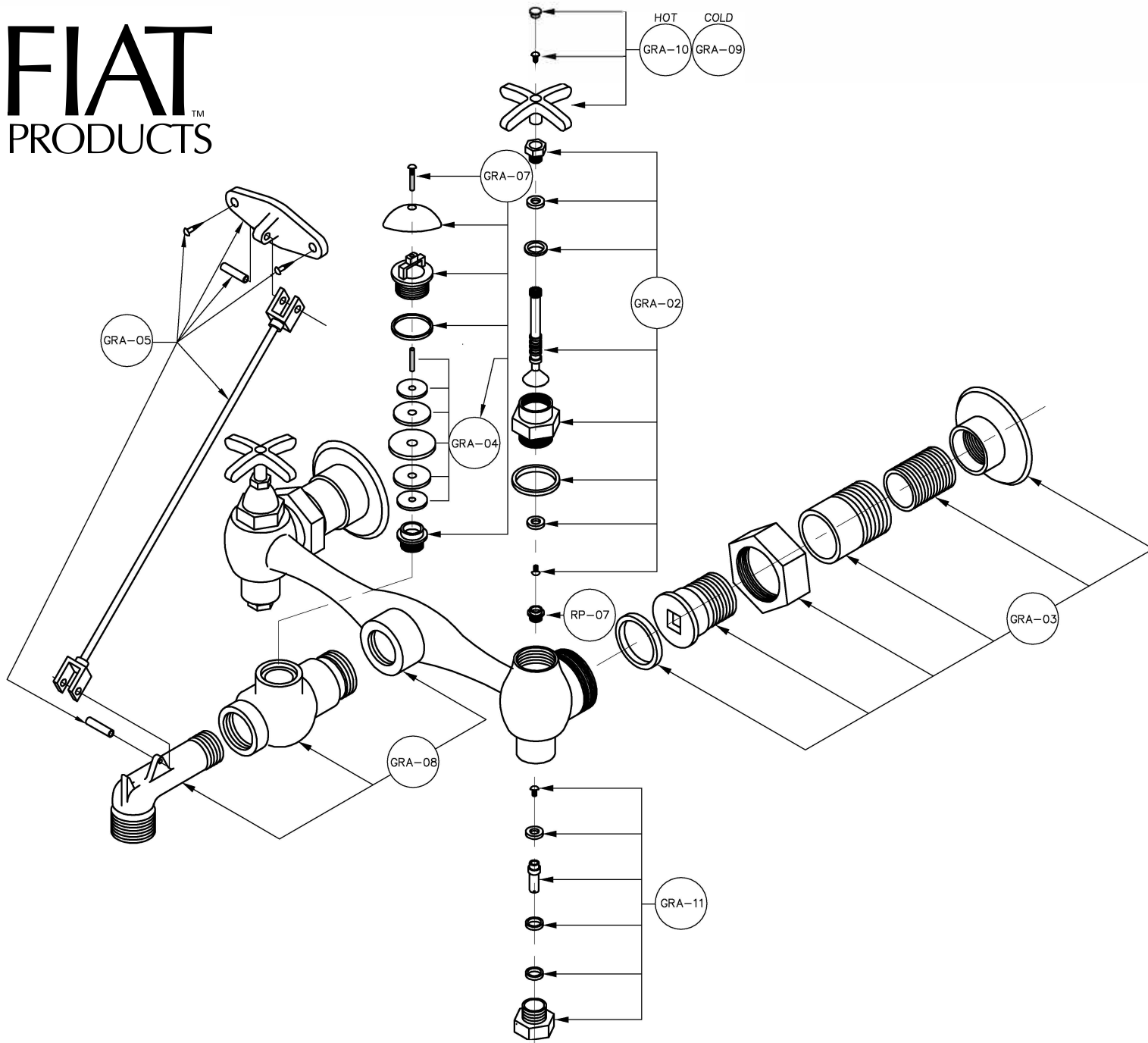
Fig. 4

## INSTALLATION INSTRUCTIONS

1. Unpack the valve and check for any damage that may have occurred during shipment.
2. Drill the supply holes for the hot and cold sides of the valve as per Fig. 1
3. Remove RP-02, RP-10, and RP-19 from the hot and cold sides of the valve and assemble as shown in Fig. 4 and place onto supply pipe for hot and cold water.
4. Once Step 3 is complete attach the valve to RP-02. NOTE: If RP-19 is not placed as shown in Fig. 4 the connection will leak.
5. Attach Brace Rod to nozzle with S.S. roll pin. Once this is completed, attach the Brace Flange to Brace Rod with S.S. roll pin. Position the Brace Flange against the wall and mark two hole locations for the Brace Flange holes and secure the Brace Flange to the wall.

FIAT PRODUCTS  
CUSTOMER SERVICE

833-549-2887  
www.fiatproducts.com



## GROUP RELACEMENT ASSEMBLY PARTS LIST

### GRA-02 HANDLE MOUNTING GROUP ASSEMBLY

SPINDLE  
SEAT WASHER  
SEAT WASHER SCREW  
PACKING NUT  
BRASS WASHER  
PACKING  
HANDLE HUB  
HUB WASHER

### GRA-03 COUPLING ASSEMBLY

COUPLING NUT  
BUSHING(SOCKET)  
SWIVEL  
WALL FLANGE  
WASHER  
NIPPLE

### GRA-05 BRACE ASSEMBLY

WOOD SCREW (2)  
BRACE FLANGE  
S.S. ROLL PIN (2)  
WALL BRACE ROD

### GRA-07 VACUUM BREAKER ASSEMBLY

SEAT  
V.B. HUB  
CAP

V.B. HUB WASHER  
V.B. CAP SCREW  
GRA-04 ASSEMBLY

### GRA-08 BODY ASSEMBLY

NOZZLE  
CENTER BODY  
V.B. BODY

### GRA-09 COLD HANDLE ASSEMBLY

HANDLE  
HANDLE SCREW  
COLD INDEX

### GRA-10 HOT HANDLE ASSEMBLY

HANDLE  
HANDLE SCREW  
HOT INDEX

### GRA-11 INTEGRAL STOP ASSEMBLY

SPINDLE  
BRASS WASHER  
WASHER  
PACKING NUT  
SEAT WASHER SCREW  
PACKING  
SEAT

### RP-07