

INSTALLATION INSTRUCTIONS CARE AND MAINTENANCE

Drop-In Self Rimming Countertop Utility Sink

Models: DL-1720

FIAT
PRODUCTS

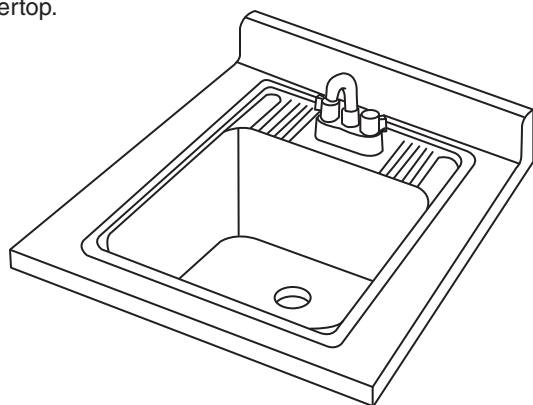
Thank you for selecting Fiat Products. To ensure this product is installed properly, please read these instructions carefully before you begin. (Certain installations may require professional help.) Also be sure your installation conforms to local codes.

IMPORTANT: Unpack your new vanity top and inspect carefully for damage. Exercise care during installation. Rough handling or dropped tools may chip or crack material.

OBSERVE LOCAL PLUMBING AND BUILDING CODES

INSTALLATION PLANNING

These laundry tubs are designed to fit into a standard cabinet countertop.



Determine the desired location of your tub on the counter top. Make sure the position will fit on the flat area of the counter top taking into account the radius curve of the back splash (if applicable). Also note clearance below the counter top to assure room for faucet and drain connections.

1 INSTALLATION PROCEDURE

Carefully measure for the countertop cutout (refer to "CUTOUT TEMPLATE" on page 2). The tub is designed to fit a cutout measuring 18" x 15-1/2". When making the layout, take note of Detail "A" below. If the countertop has a back splash, do not start the cutout closer than 1" from the radius. Otherwise, the rim of the tub may ride up on the radius, resulting in the tub being out of level.

Drill a 7/8" diameter pilot hole at each corner of the cutout. Make a saw cut along the inside of the layout lines. (See Figure 1).

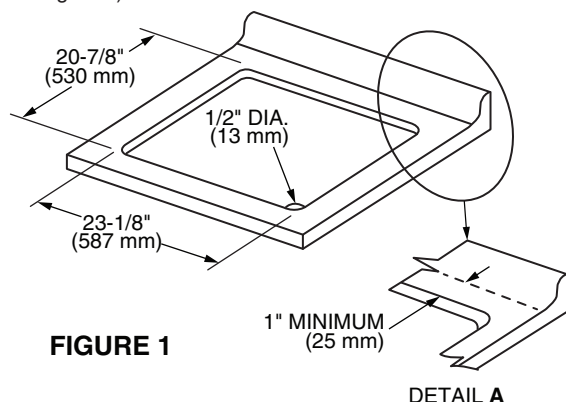
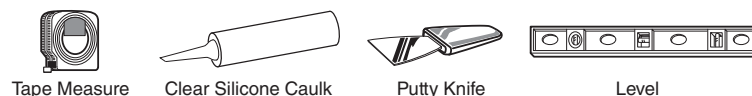


FIGURE 1

DETAIL A

Recommended Tools & Materials



2

CAUTION: DO NOT exceed the maximum dimensions indicated for the cutout. DO NOT start the cutout any closer than one inch from the radius of the back splash. Test fit the tub into the opening.

Remove tub from cutout and install faucet (supplied by others). Use flexible supply lines where permissible. If sweat connections are required, make all attachments before the tub is in place. Install the drain assembly (supplied by others).

Apply a continuous 3/8" bead of sealant to the under side of the tub rim. Lift tub and place into countertop.

Install the locking bars at the corners. These bars clamp the rim of the tub to the counter top. They are attached using screws that thread into each corner of the underside of the tub rim. (See Figure 2).

Wipe away any wet sealant before it cures.

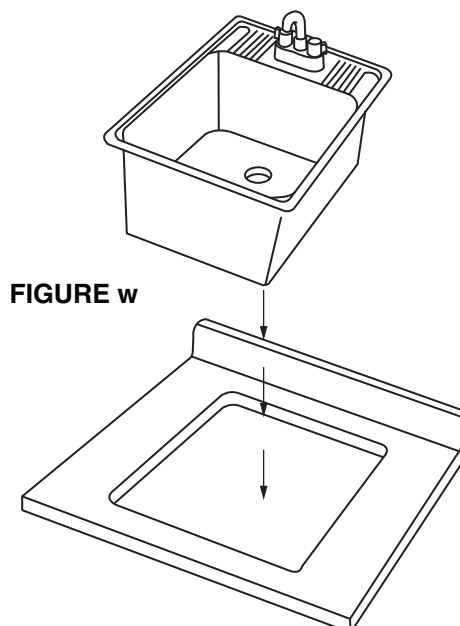
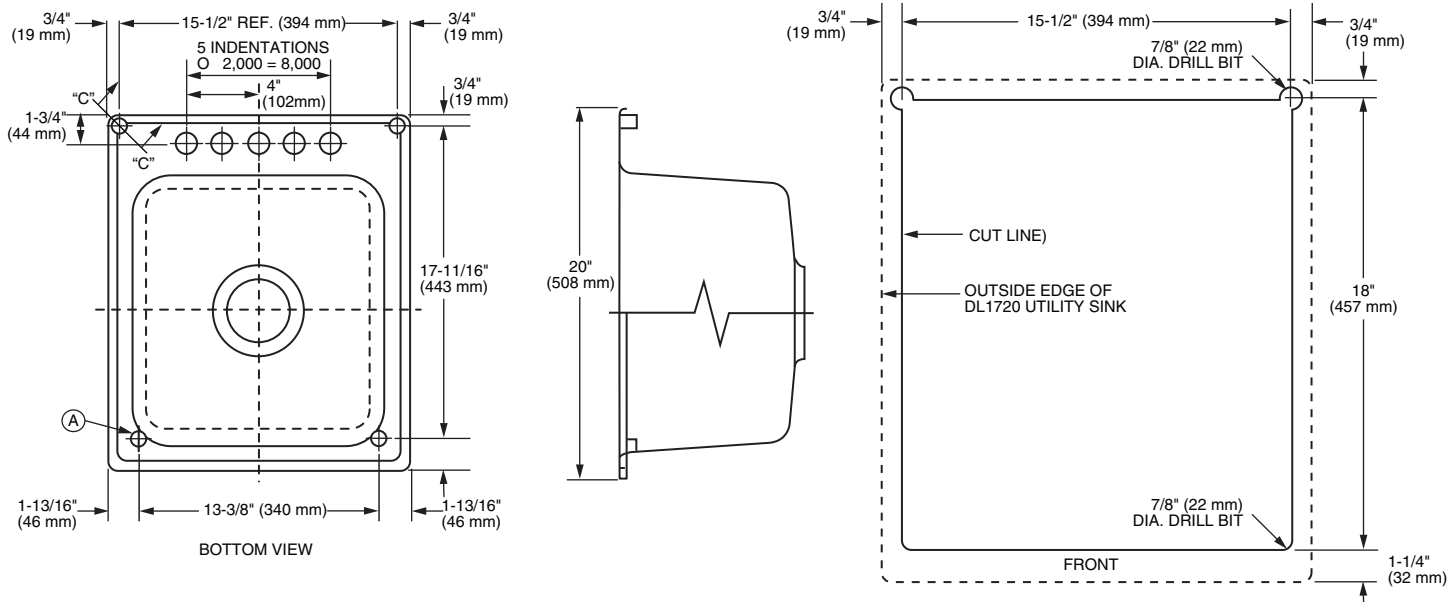


FIGURE 2



Utility Sink Care and Cleaning

This utility sink has been specifically designed and engineered to exceed demanding strength and stress factors required for use. It is stain resistant, semi gloss finish. Like any fine finish, it requires reasonable care to maintain its beauty and luster. **Day-to-day cleaning:** Wash with warm water, a soft cloth, and mild liquid detergent. **For stubborn stains:** Use a Non-Abrasive, liquid detergent cleaner, applied using a soft cloth. More persistent stains, tar, or paint can be removed with naphtha or mineral spirits. Remove excess plaster by scraping with a sharpened soft wood stick. Avoid wire brushes, metal scrapers, or tools. **NEVER USE ABRASIVE SCOURING POWDERS, SOLVENT BASED CLEANSERS, OR SCOURING PADS AS THEY TEND TO DULL THE FINISH.**

FIAT PRODUCTS® LIMITED ONE YEAR WARRANTY

FIAT Products, LLC offers a limited warranty on FIAT Products to the original Purchaser consumer, both residential and commercial. These products shall be free of defects in material and workmanship for a period of One Year.

Under this warranty FIAT Products will, at its sole discretion, upon receipt of a written claim and proof of purchase, either (1) repair the product, (2) replace the product or any part therein with a FIAT Product of equal or similar type and size, or (3) refund to the consumer the wholesale price of the product received by FIAT Products. If FIAT Products elects to refund the wholesale price to the consumer, FIAT Products shall have no further obligation to its wholesale customer, or any contractor with respect to such product. Goods proven to be defective will be replaced after proper inspection, but no claims for damages incurred or for work done thereon will be allowed. Replacements when supplied will be shipped at no cost to the consumer.

This warranty **does not apply** to local building code compliance. Since local building codes vary considerably, the purchaser of the product should check with a local building or plumbing contractor to ensure local code compliance before installation.

This warranty **will be void** if:

1) the product has been moved from its initial place of installation; 2) if it has been subjected to faulty maintenance, abuse, misuse, accident or other damage; 3) if it was not installed in accordance with FIAT Products instructions; or 4) if it has been modified in a manner inconsistent with the product as shipped by FIAT Products.

This warranty **DOES NOT COVER** any damages caused by the use of non-approved cleaners, improper installations or excessive abuse.

FIAT Products' right to repair or exchange the product under this warranty does not cover any labor or other costs of removal or installation including any costs of any surround material such as tile or marble.

FIAT Products is not responsible for any other incidental or consequential damages attributed to a product defect or to the repair or exchange of a defective product, all of which are expressly excluded from this warranty. (Some states or provinces do not allow the exclusion or limitation of implied warranties, so this exclusion may not apply to you.)

This warranty gives you specific rights. You may have other statutory rights that may vary from state to state or province to province, in which case this warranty does not affect such statutory rights.

In the United States & Canada:

FIAT Products, LLC
4515 E. 139th Street
Grandview, MO 64030
Attention: Customer Care Manager
www.fiatproducts.com

THIS WARRANTY IS NOT TRANSFERABLE FROM ORIGINAL CONSUMER PURCHASER.