

**MOLDED STONE® INTEGRAL DRAIN
MOP SERVICE BASIN TO GO**

☐ **MSBIDTG2424**

- Molding done in matched metal dies under heat and pressure resulting in a one-piece homogeneous product
- Integral drain is molded into a one piece unit and designed to connect to a 3" (76mm) drain pipe with a QIC3XH gasket
- Stainless steel strainer included
- Includes 830AA faucet, 832AA hose and bracket, 889CC mop hanger bracket. QIC3XH and 3" Quick Drain connector.

Nominal Dimensions:

24" x 24" x 10"
(610 x 610 x 254mm)

Shipping Weight:

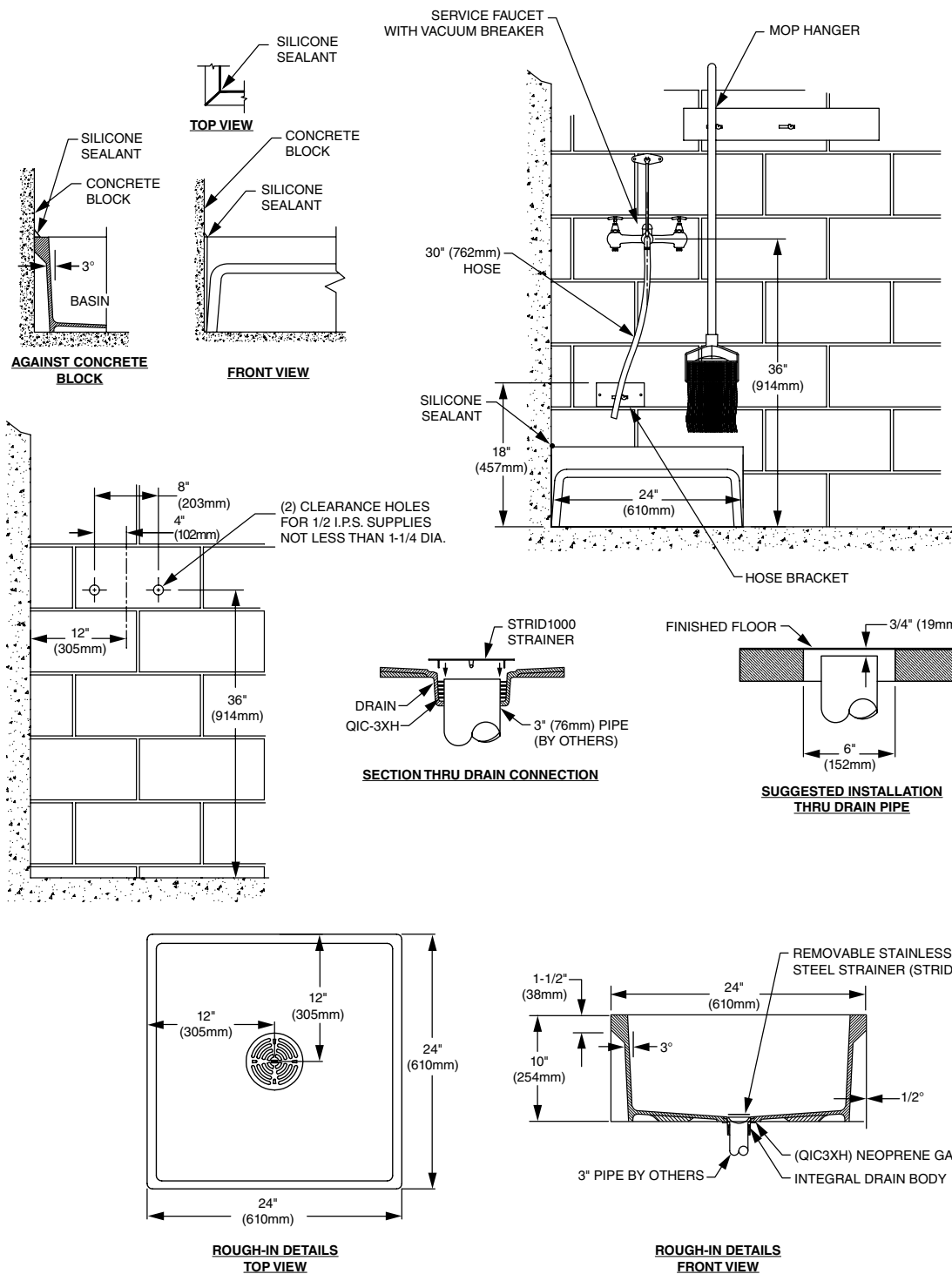
30lbs. (13.6 Kg)



SEE REVERSE FOR ROUGHING-IN DIMENSIONS

Optional Components:

- ☐ **QIC32** Quick Drain Connector for 2" pipe.
Order separately.
- ☐ **QIC3SN** Quick Drain Connector for 3" cast iron soil pipe. Order separately
- ☐ **830AA** Service Faucet:
 - Chrome plated with vacuum breaker, integral stops, adjustable wall brace, pail hook and 3/4" hose thread on spout
- ☐ **832AA** Hose & Hose Bracket
- ☐ **889CC** Mop Hanger
- ☐ **833AA** Silicone Sealant
- ☐ **E77AA24** Vinyl Bumperguard
- ☐ **MSG2424** Stainless Steel Wall Guard



Installation Note : QIC32 Quick Drain Connector for 2" pipe or QIC3SN Quick Drain Connector for cast iron soil pipe must be ordered separately.
IMPORTANT: Roughing-in dimensions may vary 1/2" and are subject to change or cancellation without prior notice