

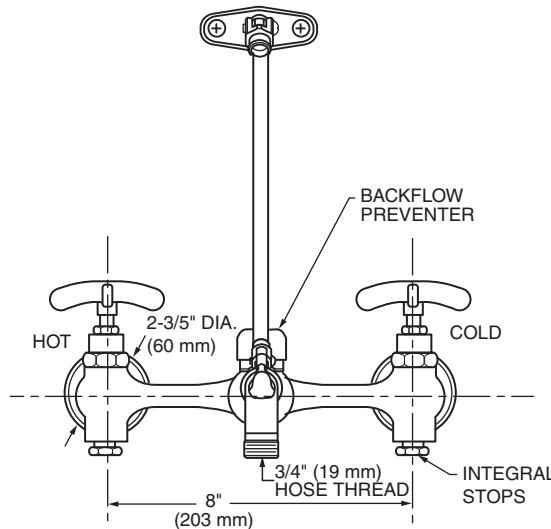
SERVICE SINK FAUCET

- Chrome plated with vacuum breaker, integral stops, adjustable wall brace, pail hook and 3/4" hose thread on spout.
- Body inlets 8" center to center, four arm handles.
- Valves contain renewable hub, renewable seats, swivel discs, encased washers and brass washer screws.
- Commercial red brass alloy casting-rough finish.
- Chrome plating exceeds requirements of ASTM B-456-71.
- Indicators cold (blue) and hot (red) are included.

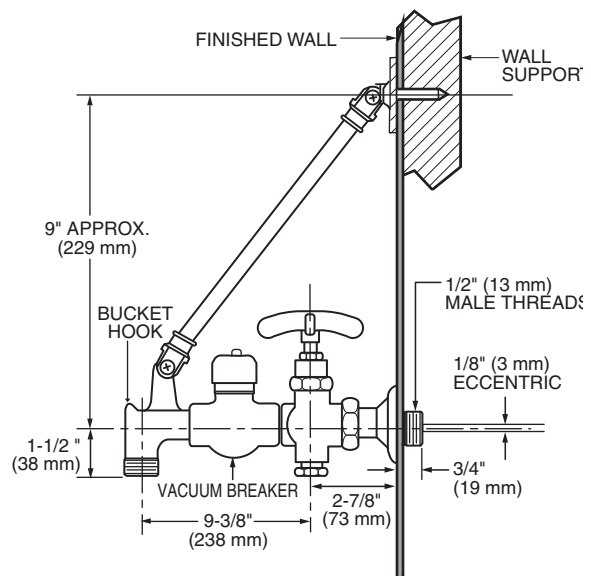
Specifications and Codes:

- Meets or exceeds requirements of: ASME A112.18.1-2018 / CSA B125.1 Plumbing Supply Fittings.
- ASSE 1001 / CSA B64.1.1 Atmospheric Type Vacuum Breakers.

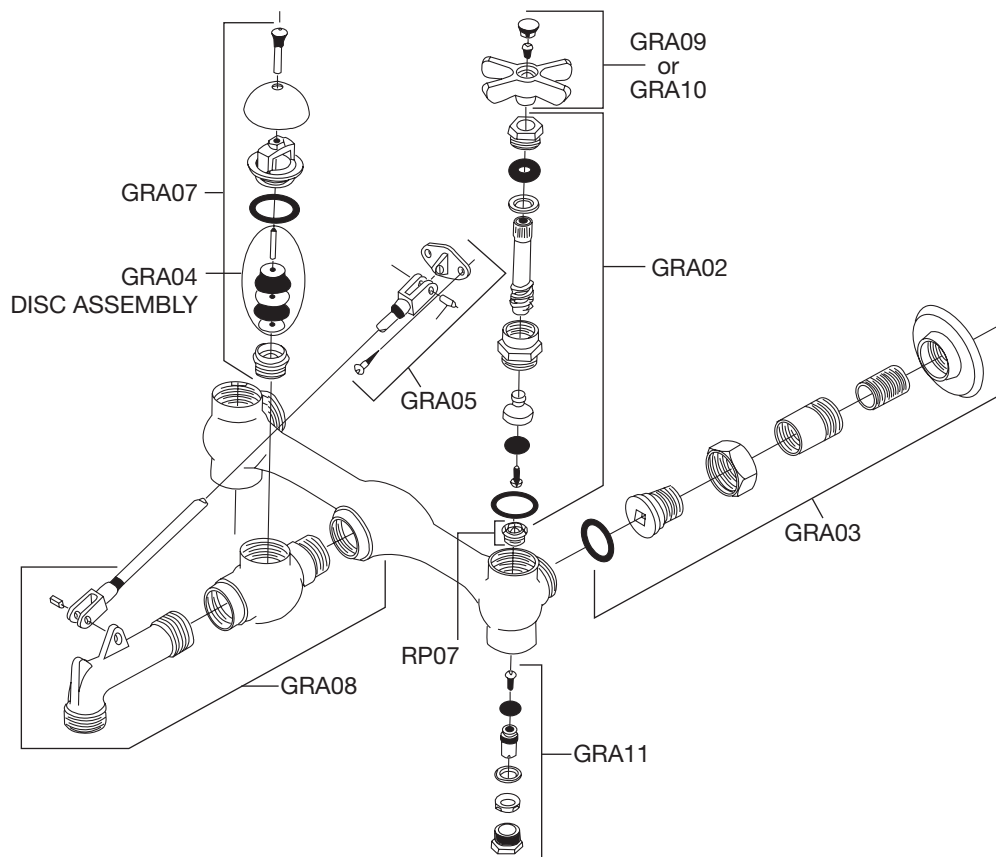
IMPORTANT: Rough-in dimensions may vary 1/4" (plus or minus) and are subject to change or cancellation without prior notice.



FRONT VIEW



SIDE VIEW



GROUP ASSEMBLY PART#	DESCRIPTION
GRA02000	Handle mounting group assembly — includes part number GRA02
GRA03000	Coupling assembly — includes part number GRA03
GRA05000	Brace assembly - includes part number GRA05
GRA07000	Vacuum breaker and disc assembly — includes part number GRA07
GRA09000	Handle assembly (cold) — includes part number GRA09
GRA10000	Handle assembly (hot) — includes part number GRA10
GRA11000	Integral stop assembly — includes part number GRA11
RP07000	Seat — one (1) per package.