

**MOLDED STONE® INTEGRAL DRAIN  
MOP SERVICE BASIN TO GO**

☐ **MSBIDTG2424**

- Molding done in matched metal dies under heat and pressure resulting in a one-piece homogeneous product
- The unit has 10" high walls with no less than 1" wide shoulders.
- Integral drain is molded into a one piece unit and designed to connect to a 3" (76mm) drain pipe with a QIC3XH gasket
- Stainless steel strainer included
- Includes 830AA faucet, 832AA hose and bracket, 889CC mop hanger bracket. QIC3XH 3" Quick Drain connector.
- Made in U.S.A.

**Nominal Dimensions:**

24" x 24" x 10"  
(610 x 610 x 254mm)

**Shipping Weight:**

35lbs. (15.9 Kg)

**Optional Components:**

- ☐ **QIC32** Quick Drain Connector for 2" pipe. Order separately.
- ☐ **QIC3SN** Quick Drain Connector for 3" cast iron soil pipe. Order separately
- ☐ **833AA** Silicone Sealant
- ☐ **MSG2424** Stainless Steel Wall Guard

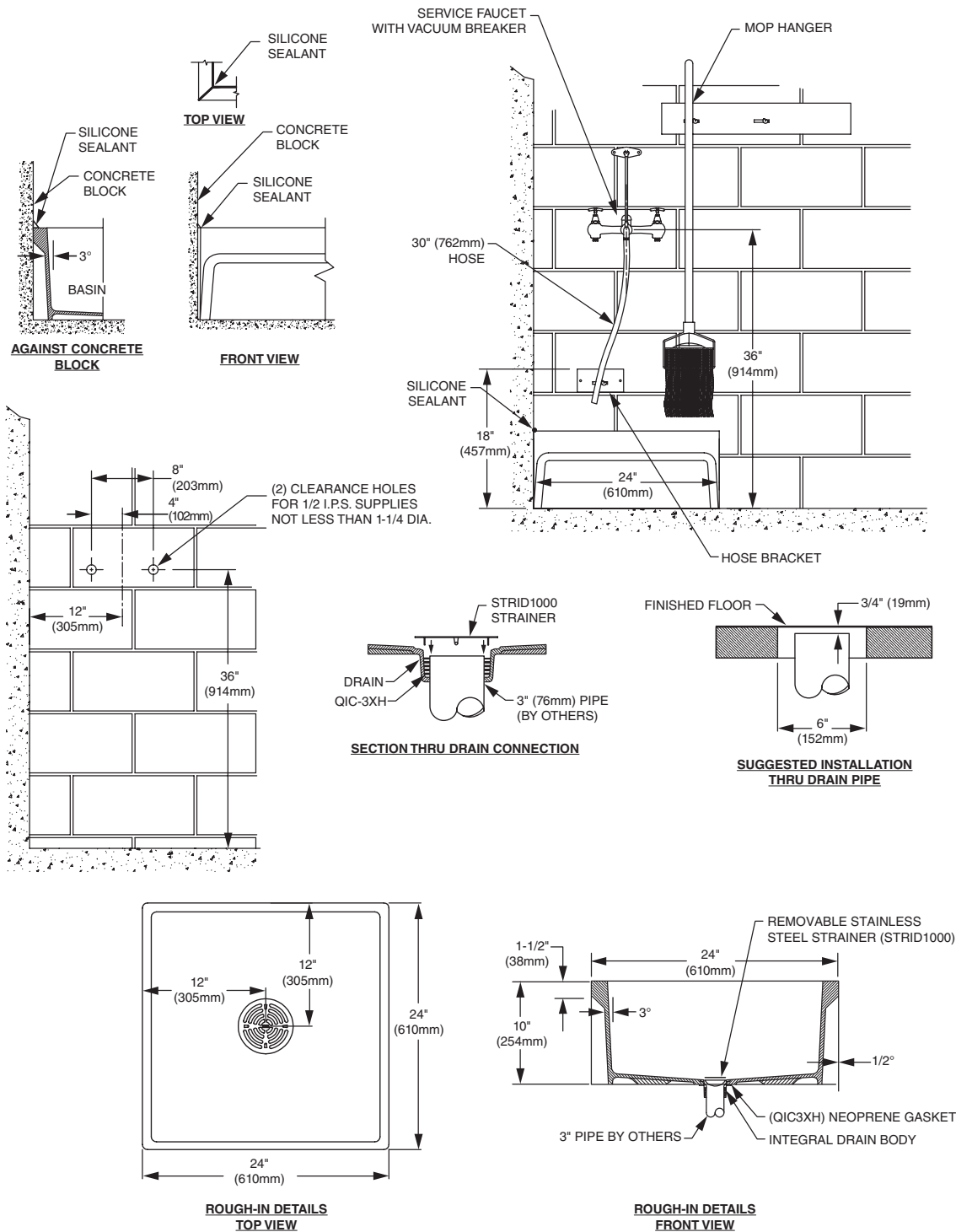
**Compliance Certifications -**

**Meets or Exceeds the Following Specifications:**

- IAPMO / ANSI Z124.6-2007
- ASME A112.18.2 / CSA B125.2
- CSA B45.5



SEE REVERSE FOR ROUGHING-IN DIMENSIONS



**Installation Note :** QIC32 Quick Drain Connector for 2" pipe or QIC3SN Quick Drain Connector for cast iron soil pipe must be ordered separately.

**IMPORTANT:** Roughing-in dimensions may vary 1/2" and are subject to change or cancellation without prior notice.