

BARRIER FREE SHOWER FLOORS

- Made of sanitary grade polyester high gloss gelcoat with reinforced composite matrix. Fire rating of "B" and a flame spread of less than 75.
- Slip-resistant, textured finished floor.
- Integral drain with chrome plated strainer and shall be installed in a pit of 1-3/4" deep so the finished floor will be level with the top of the threshold.
- It is required that the shower floor be set in a mortar base, leveled and any clearances between the pit opening and the shower floor be filled with mortar. Shimming is necessary. It is recommended that a floor drain at or near the entrance to the shower be included.
- Complies to 2010 ADA guideline.

Nominal Dimensions:

- ☐ **ADAF3636** 39" x 38-1/2" (991 x 978mm) Outside
- ☐ **ADAF6030** 64" x 33" (1626 x 838mm) Outside
- ☐ **ADAF6036** 63-1/2" x 38-1/2" (1613 x 978mm) Outside

OPTIONS:

- QIC2000 Quick Connect gasket for use with 2.375 O.D. pipe.
- QIC2CP000 Quick Connect gasket for use with 2.124 O.D. copper pipe.



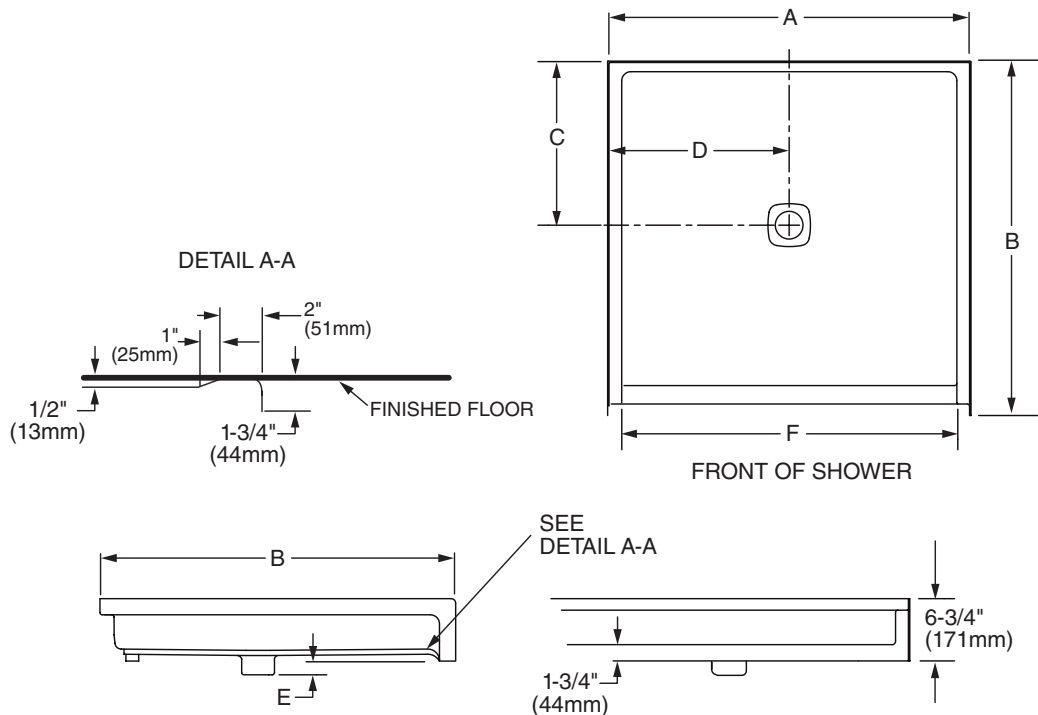
SEE REVERSE FOR ROUGH-IN DIMENSIONS

Installations:

Establish 1/4" clearance between shower floor and wall. It is required that the entire area between the receptor and the building floor have a 1/2" layer of mortar in order that shower floors be level.

It is recommended that a floor drain be installed at or near the entrance of the shower.

IMPORTANT: Rough-in dimensions may vary 1/2" (13mm) and are subject to change or cancellation without prior notice.



MODEL	A	B	C	D	E	F
ADAF-3636	39" (991mm)	38-1/2" (978mm)	17-3/4" (451mm)	19-1/2" (495mm)	1-1/2" (38mm)	36" (914mm)
ADAF-6030	64" (1626mm)	33" (838mm)	17-3/4" (451mm)	32" (813mm)	1-1/2" (38mm)	60-3/4" (1543mm)
ADAF-6036	63-1/2" (1613mm)	38-1/2" (978mm)	19" (483mm)	31-3/4" (806mm)	1-1/2" (38mm)	60-1/4" (1530mm)



MEETS THE AMERICANS WITH DISABILITIES ACT GUIDELINES
AND ANSI A117.1 ACCESSIBLE AND USABLE BUILDINGS AND
FACILITIES - CHECK LOCAL CODES.

IMPORTANT: Rough-in dimensions may vary 1/2" and are subject to change or cancellation without prior notice.