

## BARRIER FREE SHOWER FLOORS

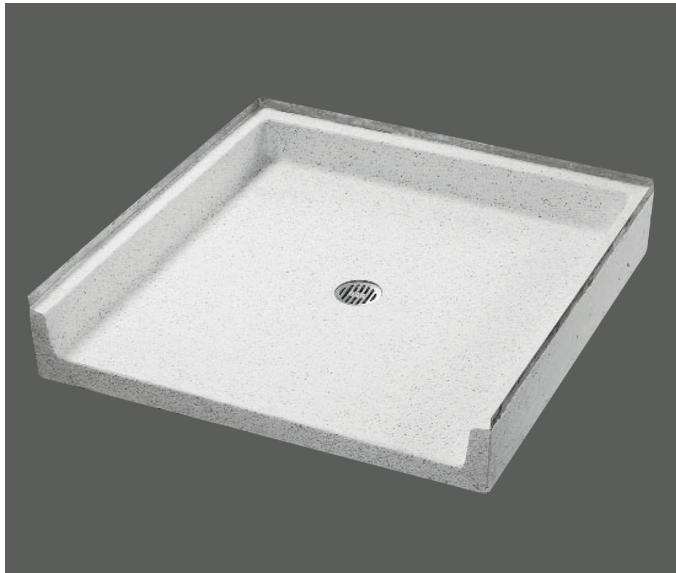
- Precast terrazzo one piece products are made of black and white marble chips cast in white portland cement to produce a compressive strength of not less than 3000 P.S.I., seven days after casting.
- The terrazzo surface is ground and polished with all air holes and/or pits grouted and the excess removed.
- Recessed for floor installation.
- Tiling flange, cast integral, shall be of stainless steel and shall extend not less than 1" (25mm) above shoulder.
- Shoulder shall not be less than 4" (102mm) high inside, 6" (152mm) high outside, and not less than 1/2" (25mm) wide.
- The stainless steel drain body is cast integrally into the shower floor and sized for a gasket or provide for a caulked lead connection not less than 1" (25mm) deep to a 2" (51mm) pipe.
- Removable type stainless steel strainer plate.
- All models are UPC listed.

### NOMINAL DIMENSIONS:

- ☐ **ADATN3636** 41.23" x 38.62" (1047 x 981mm)
- ☐ **ADATN6030** 65.23" x 32.62" (1657 x 829mm)
- ☐ **ADATN6036** 65.23" x 38.62" (1657 x 981mm)

### OPTIONS:

- Custom sizes available. Must go through custom quoting process.
- Specify color combination (black and white marble chips in white cement is standard). Colors available: white marble chips in white cement.
- Optional vandal proof drain. Must go through the custom quoting process.
- QDC4000 Quick Connect gasket for use with 2.375 O.D. pipe.



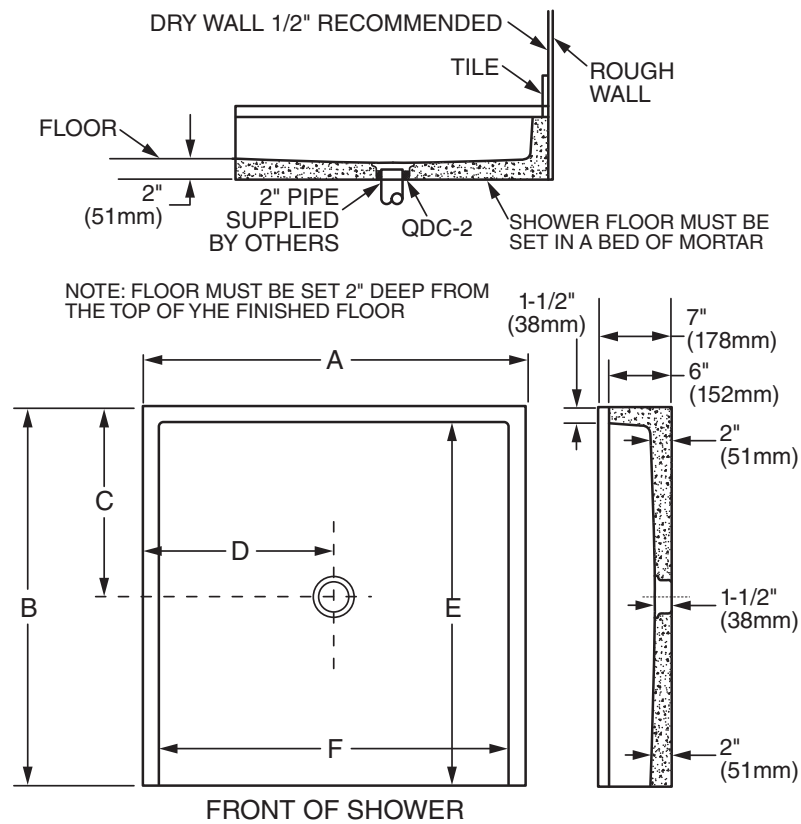
SEE REVERSE FOR ROUGH-IN DIMENSIONS

### INSTALLATIONS:

Establish 1/4" clearance between shower floor and wall. It is required that the entire area between the receptor and the building floor have a 1/2" layer of mortar in order that shower floors be level.

It is recommended that a floor drain be installed at or near the entrance of the shower.

**IMPORTANT:** Rough-in dimensions may vary 1/2" (13mm) and are subject to change or cancellation without prior notice.



	OUTSIDE DIMENSIONS				MINIMUM INSIDE DIMENSIONS	
	A	B	C	D	E	F
ADATN-3636	41.23" (1047mm)	38.62" (981mm)	18.31" (465mm)	20.62" (524mm)	36" (914mm)	36" (914mm)
ADATN-6030	65.23" (1657mm)	32.62" (829mm)	15.75" (400mm)	32.62" (829mm)	30" (762mm)	60" (1542mm)
ADATN-6036	65.23" (1657mm)	38.62" (981mm)	15.75" (400mm)	32.62" (829mm)	36" (914mm)	60" (1542mm)

**IMPORTANT:** Rough-in dimensions may vary 1/2" and are subject to change or cancellation without prior notice.