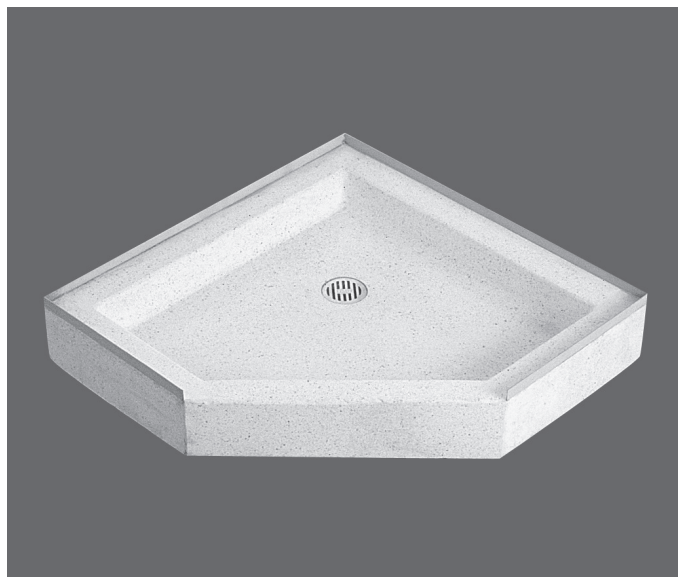


SIERRA TERRAZZO SHOWER FLOOR

- Precast terrazzo one piece products are made of black and white marble chips cast in white portland cement to produce a compressive strength of not less than 3000 P.S.I., seven days after casting.
- Terrazzo surface is ground and polished with all air holes and/or pits to be grouted and excess removed.
- Tiling flange, cast integral, is of stainless steel and shall extend not less than 1" (25mm) above the shoulder.
- Shoulder shall not be less than 1" (25mm) high and not less than 1-1/4" (32mm) wide.
- The stainless steel drain body is cast integrally into the shower floor and sized for a gasket or provide for a caulked lead connection not less than 1" (25mm) deep to a 2" (51mm) pipe.
- Removable type stainless steel strainer plate.
- All models are UPC listed.

OPTIONS:

- Custom sizes available. Must go through custom quoting process.
- Specify color combination (black and white marble chips in white cement is standard). Colors available: white marble chips in white cement.
- Optional vandal proof drain. Must go through the custom quoting process.
- QDC4000 Quick Connect gasket for use with 2.375 O.D. pipe.

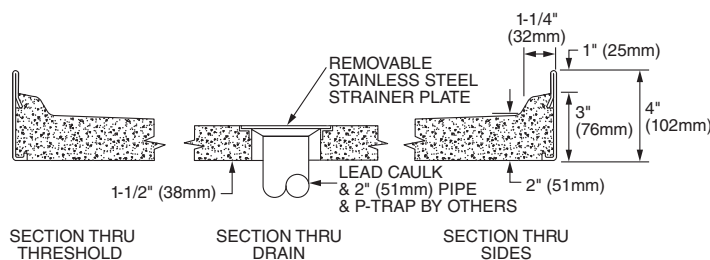


SEE REVERSE FOR ROUGH-IN DIMENSIONS

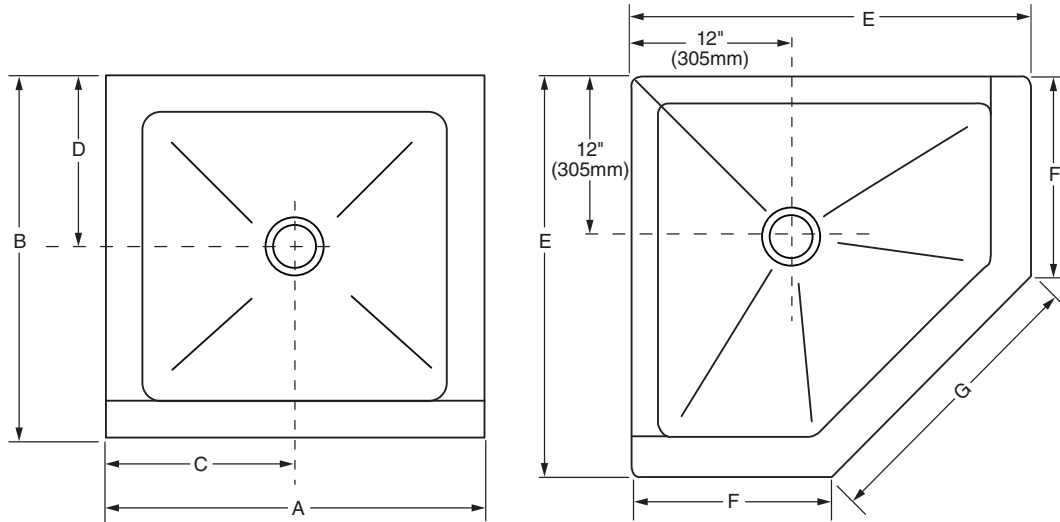
INSTALLATIONS:

Establish 1/4" clearance between shower floor and wall. It is required that the entire area between the receptor and the building floor have a 1/2" layer of mortar in order that shower floors be level.

IMPORTANT: Rough-in dimensions may vary 1/2" (13mm) and are subject to change or cancellation without prior notice.



NOTE: Drawing not to scale.



IMPORTANT: Rough-in dimensions may vary 1/2" and are subject to change or cancellation without prior notice

SIERRA® — RECTANGLE OR SQUARE					
MODEL	SIZE	A	B	C	D
32-FT	32"x 32"	32"(813mm)	32"(813mm)	16"(406mm)	16"(406mm)
36-FT	36"x 36"	36"(914mm)	36"(914mm)	18"(457mm)	18"(457mm)
40-FT	40"x 40"	40"(1016mm)	40"(1016mm)	20"(508mm)	20"(508mm)
48-FTR	48"x 32"	48"(1219mm)	32"(813mm)	24"(610mm)	16"(406mm)

SIERRA® — CORNER				
MODEL	SIZE	E	F	G
36-FTC	36"x 36"	36"(914mm)	17¼"(438mm)	26⅞"(670mm)
40-FTC	40"x 40"	40"(1016mm)	18⅞"(467mm)	30½"(775mm)