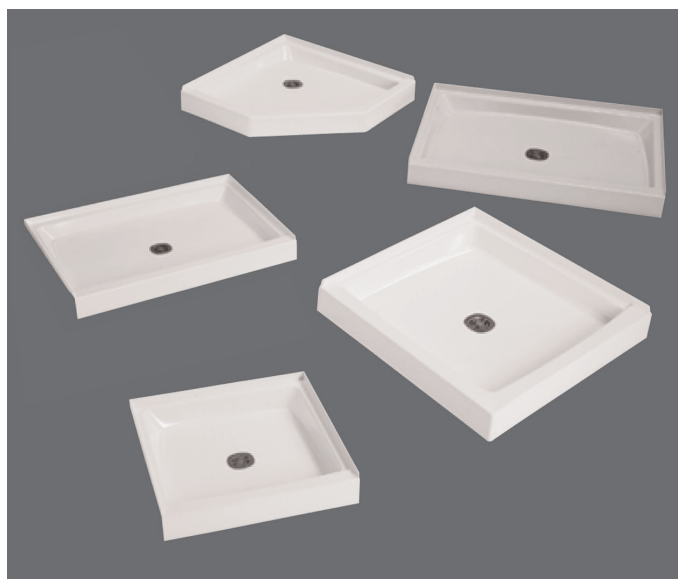
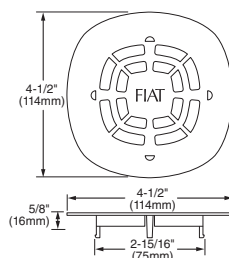


CASCADE® SHOWER FLOOR
WL / WLC / WLD SERIES

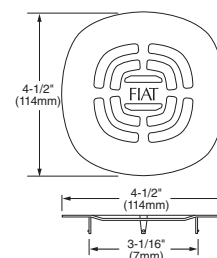
- Durable Molded Stone® construction that delivers a non-porous material resistant to mold and mildew, exceptional strength with molded in support structure, color throughout the product, superior resistance to scratching and staining, plus fire retarding properties.
- Bases are manufactured with a permanent slip resistant surface that will not trap or impede water flow.
- Bases are produced with an integral drain and includes a plastic strainer.
- Available in single and double threshold and neo-corner.
- Quick Connect Gasket applications listed in table below
- The shoulder shall be not less than 3 -1/16" high or less than 1-1/2" wide. The tiling flange shall extend not less than 1-1/2" above the shoulder and shall be not less than 1" higher than the threshold providing an integrally molded water barrier. The threshold shall be not less than 4-3/4" high (see following table).
- STRWL000: 3" Stainless Steel strainer (Not Included) 00242604100: 3" Plastic color matched strainer (included).
- Available in White only.



SEE REVERSE FOR ROUGH-IN DIMENSIONS



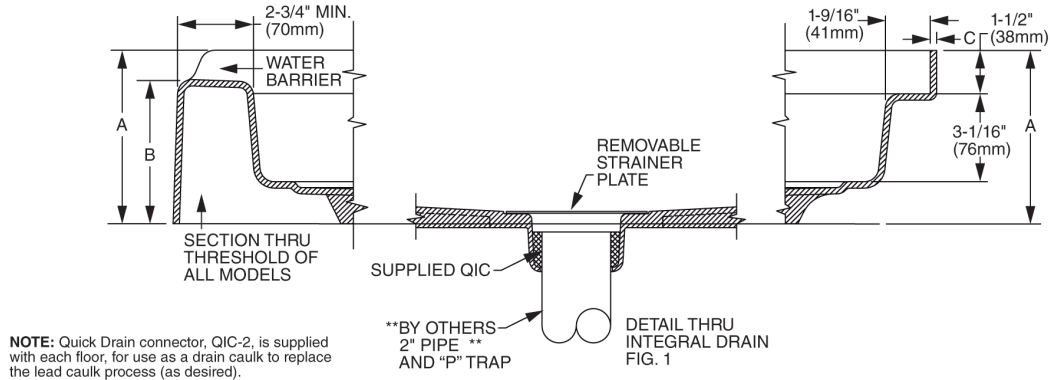
**3" Stainless Steel
Strainer Plate
STRWL000**



**3" Plastic Strainer Plate
White
00242604100**

MODEL	SIZE	MODEL	SIZE
32WL	32" x 32"	4832WL	48" x 32"
34WL	34" x 34"	54WL	54" x 34"
36WL	36" x 36"	60WL	60" x 34"
42WL	42" x 34"	36WLC	36" x 36" Neo-Corner
4242WL	42" x 42"	36WLD	36" x 36" Double Threshold
48WL	48" x 34"	38WLC	38" x 38" Neo-Corner

GASKET	HEIGHT	O.D.	I.D.	FOR USE WITH
QIC2000	1.000	3.050	2.270	2.375 O.D. Pipe
QIC2CP000	1.175	3.080	2.00	2.125 O.D. Copper Pipe

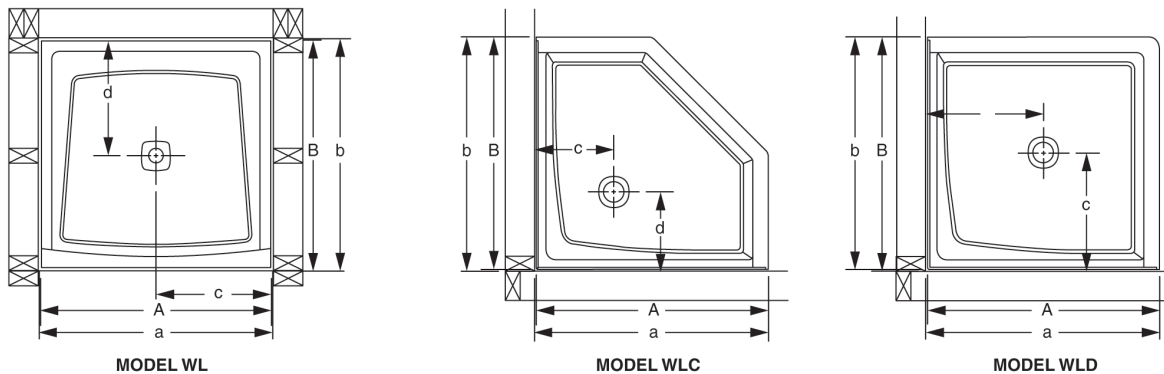
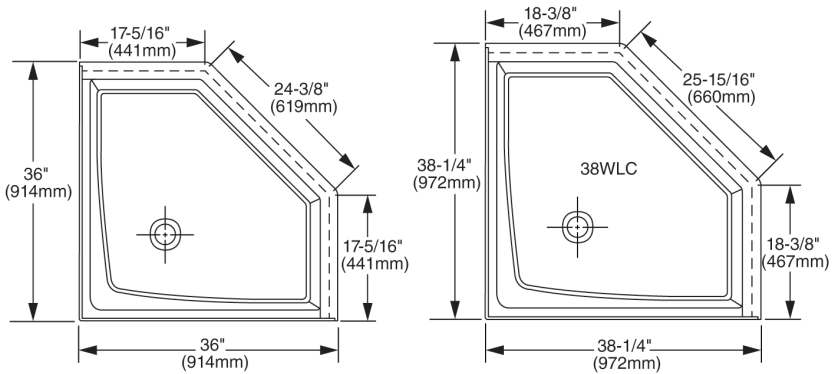
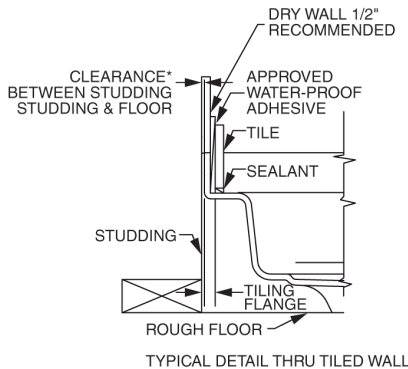


Dimensions in Inches

MODEL	NOMINAL SIZE		ACTUAL SIZE ± 1/16		ROUGHING-IN DIMENSIONS				APPROX. SHIPPING WT. lbs.
	A	B	A	B	a	b	c	d	
32WL	32	32	32	32	32-3/8	32-3/16	16-3/16	16-1/8	29
34WL	34	34	34-1/4	34-1/4	34-5/8	34-7/16	17-5/16	17-1/4	31
36WL	36	36	36	36	36-3/8	36-3/16	18-3/16	18-1/8	34
42WL	42	34	42	34	42-3/8	34-3/16	21-3/16	17-1/8	36
4242WL	42	42	42	42	42-3/4	42-1/4	21-1/8	21-1/8	48
48WL	48	34	48	34	48-3/8	34-3/16	24-3/16	17-1/8	42
54WL	54	54	54-3/8	34-1/4	54-11/16	34-9/16	27-3/8	17-5/16	47
60WL	60	34	60	34	60-3/8	34-3/16	30-3/16	17-1/8	51
36WLD	36	36	36-1/4	36-1/4	36-7/16	36-7/16	18-1/4	18-1/4	36
36WLC	36	36	36	36	36-1/4	36-1/4	12-1/4	12-1/4	39
38WLC	38	38	38-1/4	38-1/4	38-7/16	38-7/16	12-5/16	12-5/16	39
4832WL	48	32	48-3/16	32-1/8	48-1/2	32-1/4	24-1/4	16-1/8	41

*1/4" to 5/16"
for Models
32WL, 36WL
48WL, 60WL
1/8" to 3/16"
for all other
models

MODEL	TABLE (SEE FIG. 1)		
	A	B	C
32WL	6	5	7/32
34WL	6	5	5/16
36WL	5-7/8	4-3/4	7/32
42WL	6	5	7/32
48WL	5-7/8	4-3/4	7/32
54WL	6	5	5/16
60WL	6	5	7/32
36WLD	6	5	5/16
38WLC	6	5	5/16
4832WL	6	5	5/16



IMPORTANT: Rough-in dimensions may vary 1/2" and are subject to change or cancellation without prior notice.