

**MOLDED STONE® INTEGRAL DRAIN
MOP SERVICE BASIN**

MSBID2424

- Molding done in matched metal dies under heat and pressure resulting in a one-piece homogeneous product.
- The unit has 10" high walls with no less than 1" wide shoulders.
- Integral drain is molded into a one piece unit and designed to connect to a 3" (76mm) drain pipe with a QIC3XH gasket.
- Stainless steel strainer included.
- Made in U.S.A.

Nominal Dimensions:

24" x 24" x 10"
(610 x 610 x 254mm)

Shipping Weight:

26lbs. (11.8 Kg)

Optional Components:

- QIC32** Quick Drain Connector for 2" pipe. Order separately.
- QIC3SN** Quick Drain Connector for 3" cast iron soil pipe. Order separately
- 830AA** Service Faucet:
 - Chrome plated with vacuum breaker, integral stops, adjustable wall brace, pail hook and 3/4" hose thread on spout
- 832AA** Hose & Hose Bracket
- 889CC** Mop Hanger
- 833AA** Silicone Sealant
- MSG2424** Stainless Steel Wall Guard

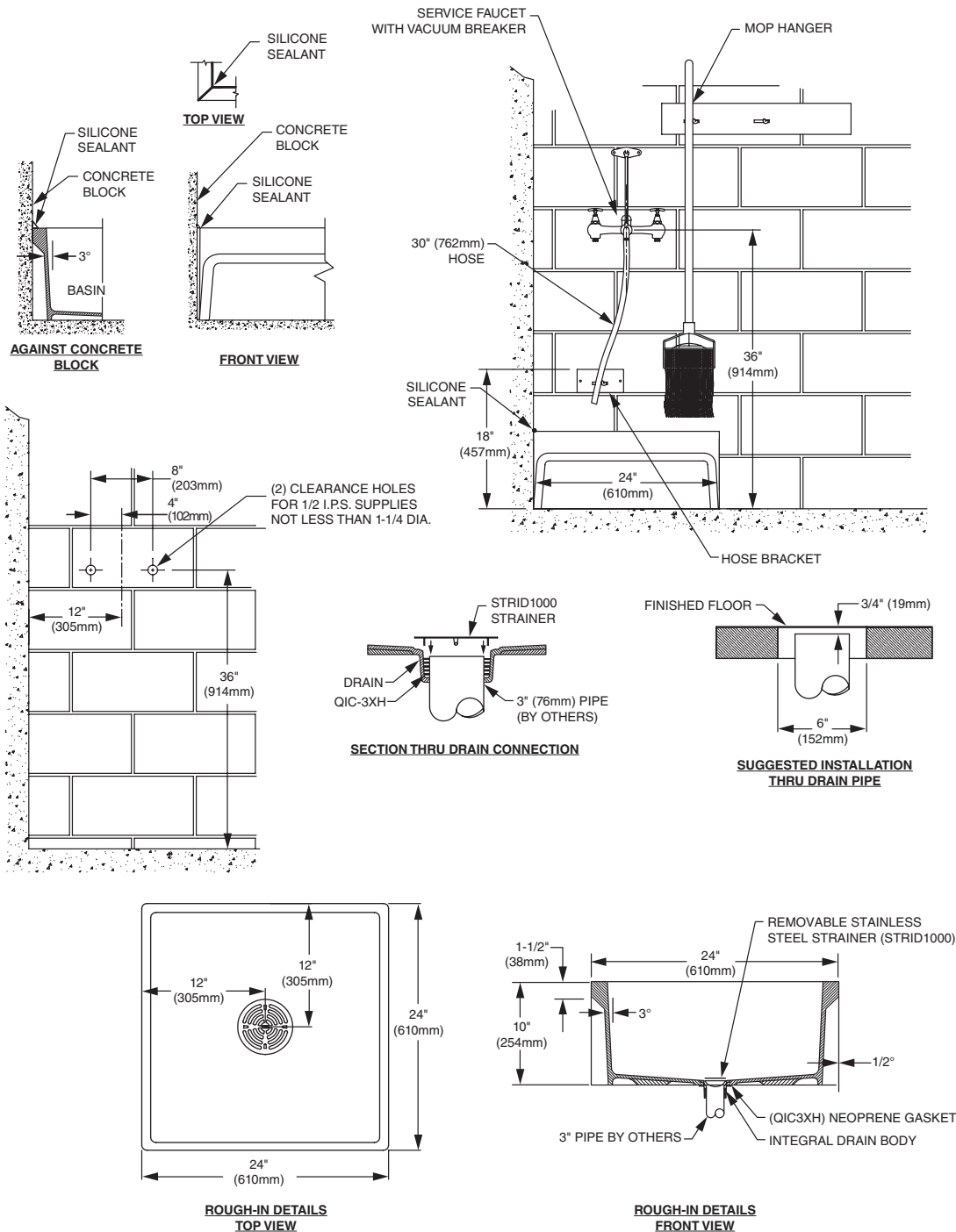
Compliance Certifications -

Meets or Exceeds the Following Specifications:

- IAPMO / ANSI Z124.6-2007
- ASME A112.18.2 / CSA B125.2
- CSA B45.5



SEE REVERSE FOR ROUGHING-IN DIMENSIONS



Installation Note : QIC32 Quick Drain Connector for 2" pipe or QIC3SN Quick Drain Connector for cast iron soil pipe must be ordered separately.

IMPORTANT: Roughing-in dimensions may vary 1/2" and are subject to change or cancellation without prior notice.