

INSTALLATION INSTRUCTIONS

BARRIER FREE Shower Bases



Note: DO NOT STORE UNITES OUTDOORS - KEEP OUT OF SUNLIGHT

Thank you for selecting Fiat Products. To ensure this product is installed properly, please read these instructions carefully before you begin. (Certain installations may require professional help.) Also be sure your installation conforms to local codes.

IMPORTANT: Keep the unit cartoned all the way to the bathroom site for added protection. Unit should be handled with care. Unpack your new shower and inspect carefully for damage. When installing unit, lay cardboard or a drop cloth on the unit floor to protect it from damage.

OBSERVE LOCAL PLUMBING AND BUILDING CODES

INSTALLATION PLANNING

Study all job prints, specifications, and instructions. Check and verify dimensions on job print with job conditions, and check level and quality of subfloor.

NOTE: Check plans for pit requirements. ADA. units with a wheelchair entry must be dropped into a pit or elevate the entire bathroom floor. A ramp can also be built leading to the unit. (See Figure 1).

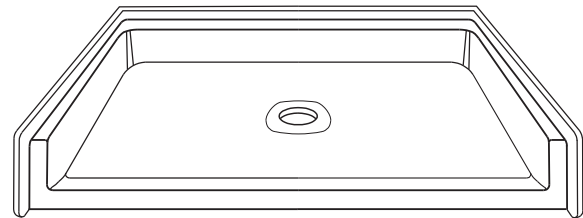
It is recommended that units be set in a bed of mortar, making sure that the units are properly leveled and shimmed where necessary.

With installations where plumbing is adjacent to masonry wall, access to plumbing connections must be provided. It is recommended to build a separate plumbing wall 6" from masonry wall. When rear of shower is against masonry wall, install furring strips on wall.

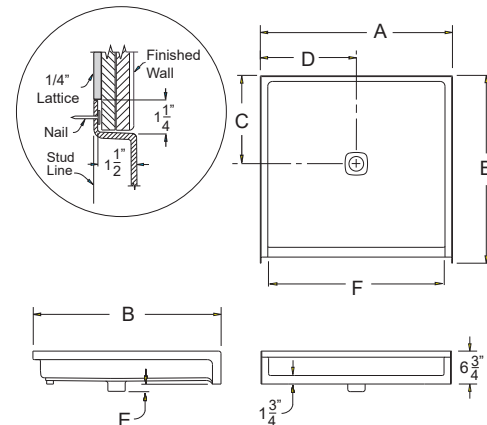
If fire walls are specified, finished fire rated drywall or equivalent should be in place before unit is installed.

NOTE: FIAT Products is not responsible for limited version units meeting ADA guidelines for proper component selection and component placement. The installer is responsible for adhering to all ADA guidelines pertaining to the selection, installation, and placement of components.

See applicable PRODUCT DIAGRAM for dimensional information when planning the framed pocket.



PRODUCT DIAGRAM



MODEL	A	B	C	D	E	F
ADAF3636	39	38½	17¾	19½	1½	36
ADAF6030	64	33	16¾	32	1½	60¾
ADAF6036	63½	38½	19	31¾	1½	60¾

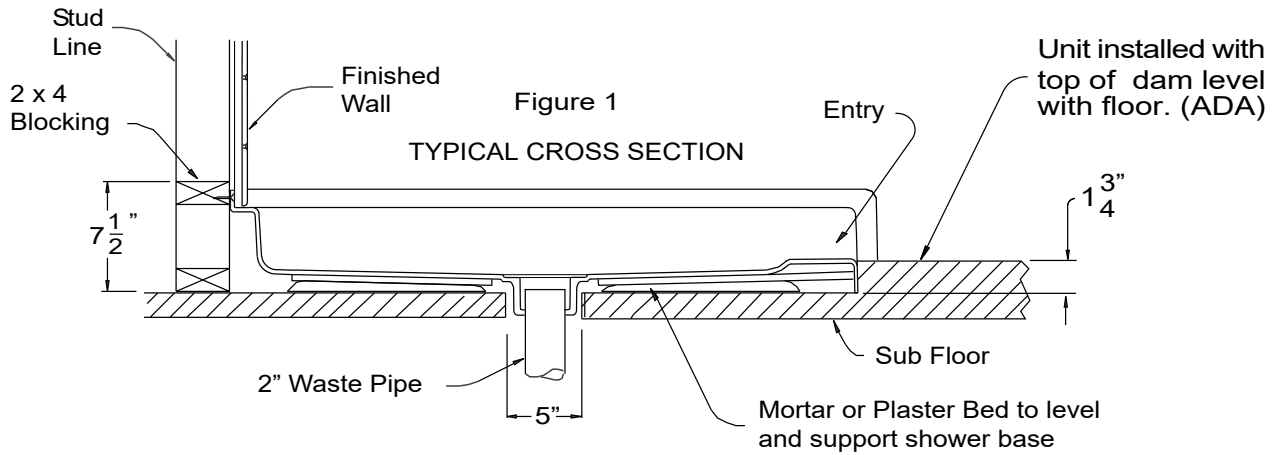
1 INSTALLATION

Place the installation in relation to the finished wall material. The shower base has a flat area of 1-3/8" wide along the side and back to accommodate finished wall materials. If a shower door is used, the finished surface of the side walls should be even with the shower base opening size "F" in the PRODUCT DIAGRAM. This is necessary to install the door correctly.

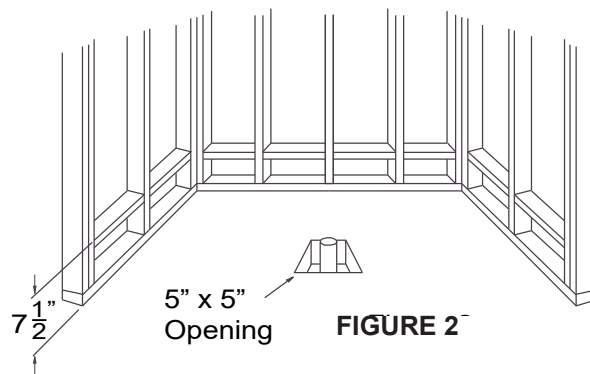
The shower base can be installed with the dam at floor level. This is REQUIRED to meet ADA. This can be accomplished two ways:

1. Recess the unit 1-3/4" below the finished floor level or,
2. Elevate the entire bathroom floor 1-3/4"

A ramp can also be built leading to the unit, If the unit is recessed into the floor, be sure that a solid structural sub floor, in accordance with good building practice, has been constructed beneath the shower unit.



Make sure your framed pocket is square and plumb in accordance with rough-in dimensions shown in the appropriate PRODUCT DIAGRAM.



Provide an opening in the sub floor no less than 5" x 5" square.
This opening should be centered on the shower base drain hole. (See PRODUCT DIAGRAM).
The opening should accommodate the drain receptor, and a 2" waste pipe.

1. Typically, the waste pipe is installed through the shower drain receptor as the shower base is lowered into position. After shower is in final position, apply lubricant (such as mineral oil) to the rubber gasket and slip it over the drain pipe. Push the gasket to the bottom of the receptor to seal.
2. If access to the drain pipe can be gained from below, such as a basement, or crawlspace, the drain pipe can be installed after the shower base has been placed and attached to the studs.
3. Apply a grid pattern of mortar or plaster to the sub floor in the alcove. With the drain receptor passing over the waste pipe slowly lower the shower base into place. Push down firmly until the base is level in all directions. See Figure 4.

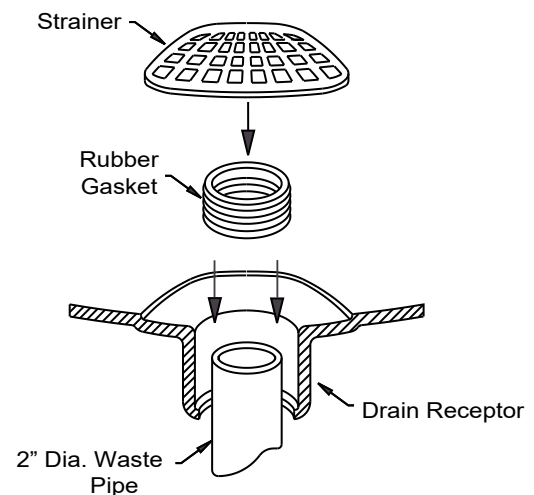


FIGURE 3

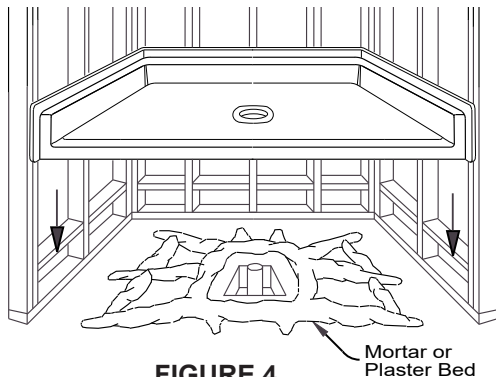


FIGURE 4

4. When the base is level and the bottom edge of the dam is fully in contact with the sub floor, attach it to the framing through the mounting flanges. Pre drill pilot holes, and countersink, Attach with drywall screws or galvanized roofing nails into the blocking and wall studs every 8 inches.

5. Above 1/4" lattice strips to the face of the framing above the shower base. Install the wallboard to this surface, covering the mounting flanges.

6. To make the finished wall surface even with the shower entry, it may be necessary to double layer the wallboard. This may depend on the finished wall materials used. Figure 5 shows a typical installation with two layers of 1/2" wallboard and a ceramic tile surface.

7. Caulk gap between shower and bottom of wall.

8. Using a large screwdriver make certain the rubber gasket is seated to the bottom of the drain receptor.

9. Finish the installation bu snapping the strainer into place.

NOTE: Watertight installation of the drain is installers responsibility. Drain leakage is excluded from the limited warranty.

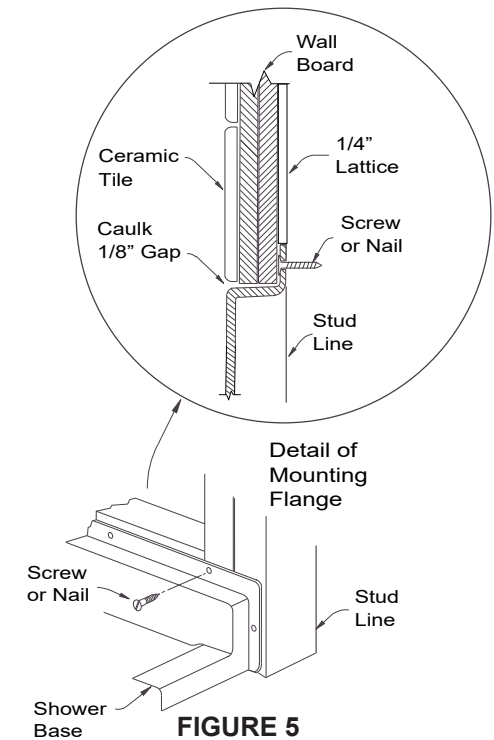
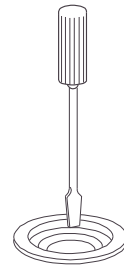


FIGURE 5

SHOWER BASE CARE AND CLEANING

This shower floor has been specifically designed and engineered to exceed demanding strength and stress factors required for use. It is stain resistant, semi gloss finish. Like any fine finish, it requires reasonable care to maintain its beauty and luster. **Day-to-day cleaning:** Wash with warm water, a soft cloth, and mild liquid detergent. **For stubborn stains:** Use a Non-Abrasive, liquid detergent cleaner, applied using a soft cloth. More persistent stains, tar, or paint can be removed with naphtha or mineral spirits. Remove excess plaster by scraping with a sharpened soft wood stick. Avoid wire brushes, metal scrapers, or tools.

NEVER USE ABRASIVE SCOURING POWDERS, SOLVENT BASED CLEANSERS, OR SCOURING PADS AS THEY TEND TO DULL THE FINISH.

To enhance the luster: Dull areas may be restored or light scratches removed by rubbing with automotive type body cleaning compound.

If automotive compound is used, it should be followed by a light application of automotive paste wax or Novis Plastic Polish No. 1.

Caution: Dry cleaning agents and solvents will damage the surface. Burning cigarettes should not be allowed to come into contact with the surface or discoloration may ensue.

If you use a RUBBER FLOOR MAT in this shower unit it must be removed after each usage. If left in the unit it may cause blisters or damage to the surface finish.

NOTE: We recommend using **URC Fiberglass Tub and Shower Cleaner**. Ask for it where you purchased your new unit

Packing List	
QTY	Description
1	Shower Floor
1	Rubber Drain Gasket (QIC2)
1	Strainer

**FIAT PRODUCTS, LLC. LIMITED ONE YEAR WARRANTY
FOR PERSONAL RESIDENTIAL AND COMMERCIAL USE OF FIAT® PRODUCTS**

WARRANTY COVERAGE

FIAT Products warrants products against defects in material and workmanship under both normal residential and commercial use for as long as it is owned by the original purchaser for a period of one (1) year from the date of first purchase.

This warranty is provided for the exclusive benefit of the initial consumer purchaser or owner. This warranty is non-transferable to subsequent purchasers or owners. The sole exception to the non-transferability of this warranty is that if this product is purchased by a plumber, contractor or other service provider, this warranty extends to the first residential or commercial property owner on whose behalf the product was purchased for installation. This warranty applies only to FIAT® Products installed in the United States of America or Canada.

If a defect arises and a valid claim is received, FIAT Products, at its option, will either (1) repair the product, (2) replace the product or any part therein with a FIAT product of equal or similar type and size, or (3) refund to the consumer the wholesale price of the product. If FIAT Products elects to refund the wholesale price to the consumer, FIAT Products shall have no further obligation to its wholesale customer, or any contractor with respect to such product. Goods proven to be defective will be replaced after proper inspection, but no claims for damages incurred or for work done thereon will be allowed. Replacements when supplied will be shipped at no cost to the consumer.

EXCLUSIONS AND LIMITATIONS

1. This warranty only applies to products purchased through an authorized FIAT® Products dealer or re-seller.
2. This warranty does not apply to defects or damage caused by non-genuine FIAT parts, installation error, product abuse, product misuse, improper maintenance, improper care or cleaning, improper repair or installation, and/or movement or transfer of the product from its original installation location (whether performed by you, a plumber, a contractor or a service company). Because improper care and cleaning can cause significant damage to the product, it is strongly recommended that you follow the Care and Cleaning Instructions (as well as the other instructions).
3. FIAT Products is not responsible for labor charges and/or damage incurred during installation, repair, or replacement.
4. FIAT Products does not warrant that this product and/or its installation complies with local code requirements. FIAT Products recommends that you consult with a plumbing contractor about local code requirements.

TO THE EXTENT PERMITTED BY LAW, THIS WARRANTY IS EXCLUSIVE AND IN LIEU OF ALL OTHER WARRANTIES, WHETHER ORAL OR WRITTEN, STATUTORY, EXPRESS, OR IMPLIED. FIAT PRODUCTS HEREBY EXCLUDES SPECIAL, INCIDENTAL AND CONSEQUENTIAL DAMAGES FOR ANY BREACH OF ANY EXPRESS OR IMPLIED WARRANTY APPLICABLE TO THIS PRODUCT.

Some states do not allow the exclusion or limitation of incidental or consequential damages, so the above limitations and exclusions may not apply to you. This warranty gives you specific legal rights, and you may also have other rights which vary from state to state (or province, as applicable).

OBTAINING WARRANTY SERVICE

If you feel you have a warranty claim, contact FIAT Products, either through an authorized FIAT Products dealer or re-seller, or by writing:

In the United States and Canada:

FIAT Products, LLC
4515 E. 139th St.
Grandview, MO 64030

Please be sure to provide all pertinent information regarding your claim, including a complete description of the problem, the product, model number, color, finish, purchase date, and from whom the product was purchased.

For other information, call (833) 549-9244 (in the United States and Canada) or visit www.fiatproducts.com.